



Indoor Lighting Series



Model	4614		
Power	10w x 2		
Size (exclude bracket)	80mm(D) x 131mm(H)	Size (include bracket)	209mm(D) x 243mm(H)
Introduction	Surface mounting, angle adjustable LED spotlight, Aluminum Die-casting & Anti-Static powder coating fixture body, anti-glare, excellent thermal design, integrated LED driver.		



Model	4618		
Power	10w		
Size (exclude bracket)	80mm(D) x 131mm(H)	Size (include bracket)	145mm(D) x 243mm(H)
Introduction	Surface mounting, angle adjustable LED spotlight, Aluminum Die-casting & Anti-Static powder coating fixture body, anti-glare, excellent thermal design, integrated LED driver.		



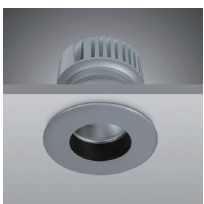
Model	4624		
Power	10w x 2		
Size (exclude bracket)	80mm(D) x 131mm(H)	Size (include bracket)	209mm(D) x 243mm(H)
Introduction	Rail mounting, angle adjustable LED spotlight, Aluminum Die-casting & Anti-Static powder coating fixture body, anti-glare, excellent thermal design, integrated LED driver.		



Model	4626		
Power	10w		
Size (exclude bracket)	80mm(D) x 131mm(H)	Size (include bracket)	126mm(D) x 243mm(H)
Introduction	Rail mounting, angle adjustable LED spotlight, Aluminum Die-casting & Anti-Static powder coating fixture body, anti-glare, excellent thermal design, integrated LED driver.		



Model	1607		
Power	10w		
Size	93mm(D) x 90mm(H)	Cutting Size	OD83mm
Introduction	Flush mounting, angle adjustable LED downlight, cold-rolled steel & Anti-Static powder coating fixture body, high power LED, anti-glare, excellent thermal design, external LED driver.		



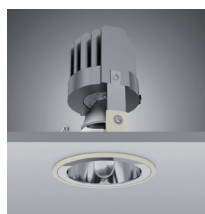
Model	1608		
Power	10w		
Size	85mm(D) x 93mm(H)	Cutting Size	OD74mm
Introduction	Flush mounting downlight, cold-rolled steel & Anti-Static powder coating fixture body, high power LED, anti-glare, excellent thermal design, external LED driver.		



Model	1609
Power	10w
Size	85mm(D) x 78mm(H) <b>Cutting Size</b> OD74mm
Introduction	Flush mounting downlight, cold-rolled steel & Anti-Static powder coating fixture body, high power LED, anti-glare, excellent thermal design, external LED driver.



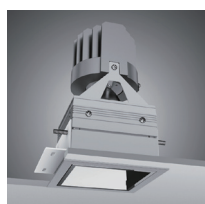
Model	2612
Power	10w x 2
Size	210mm(L) x 110mm(W) x 102mm(H)
Cutting Size	205mm(L) x 104mm(W)
Introduction	Flush mounting downlight, cold-rolled steel & Anti-Static powder coating fixture body, high power LED, anti-glare, excellent thermal design, external LED driver.



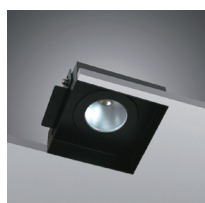
Model	4631
Power	10w
Size	110mm(D) x 151mm(H) <b>Cutting Size</b> OD100mm
Introduction	Flush mounting downlight, Aluminum Die-casting & Anti-Static powder coating fixture body, secondary bounces anti-glare. can be equipped with frosted glass, filters, etc. external LED driver.



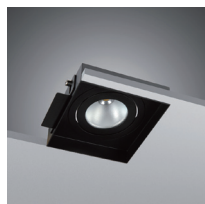
Model	4634
Power	10w
Size	125mm(D) x 77mm(H) <b>Cutting Size</b> OD100mm
Introduction	Flush mounting, angle adjustable LED downlight, Aluminum Die-casting & Anti-Static powder coating fixture body, excellent thermal design, external LED driver.



Model	4632
Power	10w
Size	100mm(L) x 100mm(W) x 83mm(H)
Cutting Size	100mm(L) x 100mm(W)
Introduction	Flush mounting downlight, Aluminum Die-casting & Anti-Static powder coating fixture body, secondary bounces anti-glare. can be equipped with frosted glass, filters, etc. external LED driver.



Model	2641
Power	10w
Size	100mm(L) x 100mm(W) x 102mm(H)
Cutting Size	104mm(L) x 104mm(W)
Introduction	Flush mounting, no border square downlight, cold-rolled steel & Anti-Static powder coating fixture body, high power LED, anti-glare, excellent thermal design, external LED driver.



Model	2661
Power	10w
Size	100mm(L) x 100mm(W) x 102mm(H)
Cutting Size	104mm(L) x 104mm(W)
Introduction	Flush mounting, no border square downlight, angle adjustable, cold-rolled steel & Anti-Static powder coating fixture body, high power LED, anti-glare, excellent thermal design, external LED driver.



Model	2642
Power	10w x 2
Size	200mm(L) x 100mm(W) x 102mm(H)
Cutting Size	204mm(L) x 104mm(W)
Introduction	Flush mounting, no border downlight, angle adjustable, cold-rolled steel & Anti-Static powder coating fixture body, high power LED, anti-glare, excellent thermal design, external LED driver.



Model	2651
Power	10w
Size	110mm(L) x 110mm(W) x 102mm(H)
Cutting Size	105mm(L) x 104mm(W)
Introduction	Flush mounting downlight, cold-rolled steel & Anti-Static powder coating fixture body, high power LED, anti-glare, excellent thermal design, external LED driver.



Model	2671
Power	10w
Size	110mm(L) x 110mm(W) x 102mm(H)
Cutting Size	104mm(L) x 104mm(W)
Introduction	Flush mounting downlight, angle adjustable, cold-rolled steel & Anti-Static powder coating fixture body, high power LED, anti-glare, excellent thermal design, external LED driver.



Model	2652
Power	10w x 2
Size	210mm(L) x 110mm(W) x 102mm(H)
Cutting Size	205mm(L) x 104mm(W)
Introduction	Flush mounting downlight, angle adjustable, cold-rolled steel & Anti-Static powder coating fixture body, high power LED, anti-glare, excellent thermal design, external LED driver.



Model	4621
Power	10w
Size	100mm(L) x 100mm(W) x 110mm(H)
Introduction	Surface mounting downlight, cold-rolled steel & Anti-Static powder coating fixture body, high power LED, anti-glare, excellent thermal design, external LED driver.



Model	4622
Power	10w x 2
Size	200mm(L) x 100mm(W) x 110mm(H)
Introduction	Surface mounting downlight, cold-rolled steel & Anti-Static powder coating fixture body, high power LED, anti-glare, excellent thermal design, external LED driver.



Model	4616
Power	10w
Size	80mm(W) x 190mm(H)
Introduction	Surface mounting, angle adjustable LED downlight, Aluminum Die-casting & Anti-Static powder coating fixture body, anti-glare, excellent thermal design, external LED driver.



Model	4628
Power	10w
Size	80mm(W) x 130mm(H)      80mm(W) x 103mm(H)
Introduction	Surface mounting Swag light, Aluminum Die-casting & Anti-Static powder coating fixture body, anti-glare, excellent thermal design, integrated LED driver.

